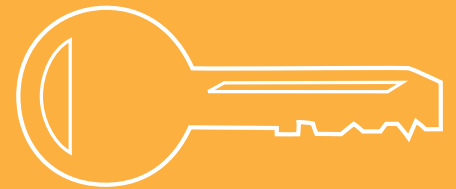


## PROJECTOR SECURITY GUIDE



# PROJECTOR SECURITY GUIDE

## SECURITY LEVEL BASIC

### Block projector theft and protect your AV investment!

Chief®, the industry leader in mounting solutions, offers a broad lineup of products focused on projector security and protection.

#### BASIC

Chief's All-Points™ Security locking hardware at all key connection points prevents the ability to remove the projector from the mount. Access can be obtained with the use of a security wrench.

#### INTERMEDIATE

Chief's PL™ Series of Projector Locks consist of an all-steel vented lock box that fits around an RPA™ Series mount and secures with a key.

Chief's RPA Elite™ projector mounts were designed with integrated security via the exclusive Q-Lock Locking Lever.

#### ADVANCED

Chief's RPA and RPA Elite Security Series of mounts are all-in-one solutions that rely solely on key and lock security. Fasteners are concealed beneath the universal steel interface and virtually inaccessible.

#### COMPLETE

When maximum security is needed. PG™ Series of Projector Guards enclose the projector inside a solid steel cage for ultimate protection.



### ALL-POINTS SECURITY

Tamper-resistant hardware at all key connection points to deter theft.

#### RPA Series



RPA-xxx Custom Projector Mount

RPAU Universal Projector Mount

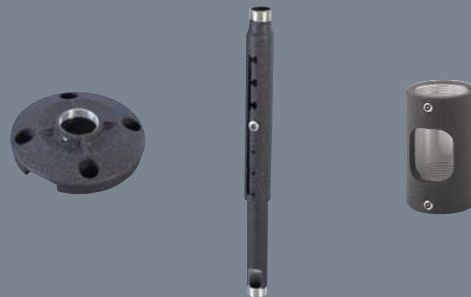
#### RPA Elite Series



RPM-xxx Custom Projector Mount

RPMU Universal Projector Mount

#### Accessories



CMS115 Ceiling Plate

CMS-0XX0XX Adjustable Extension Column

CMA152 1-1/2" to 1-1/2" NPT Coupler

Available Color Options = ■ ■ ■ ■

## PROJECTOR LOCKS

Secures mount with key and lock security combined with All-Points Security.

### PL Series



PL1(A/B/C) Projector Lock ■

PL2(A/B/C) Mini Projector Lock ■

\*For use with RPA-xxx Series

### RPA Elite with Q-Lock



RPM(A/B/C)-xxx Custom Projector Mount with Q-Lock Key Option A, B or C ■

RPM(A/B/C)-U Universal Projector Mount with Q-Lock Key Option A, B or C ■ ■ ■

## SECURITY MOUNTS

All-in-one security/mount solution that relies solely on key and lock security (no exposed fasteners).

### RPA Security Series



RPA(A/B/C)1 All-In-One Security Mount with Key Option A, B or C ■ ■

### RPA Elite Security Series



RPM(A/B/C)1 All-In-One Security Mount with Q-Lock Key Option A, B or C ■ ■ ■

## SECURITY CABLES

Add additional security to any installation with security cables.

### PM-SC



PM-SC

\*For use with RPA(A/B/C)1 and RPM(A/B/C)1 Series

### HC1



HC1 Heavy Duty Cable System

### Cable Locks



LC1 Cable Lock

PL4 Projector Lock

### Anchor Points



SA1 Security Anchor

SSC4 Security Screw Cover Kits

## PROJECTOR GUARDS

Encloses the mount and projector inside a steel cage for ultimate security.

### PG1 Series



PG1A Projector Guard

### PG2 Series



PG2A Projector Guard



## RPA Elite Projector Mount

Custom option shown



### Q-Lock™

#### Integrated Locking Lever

Provides enhanced security with an integrated key and lock system.

\*Optional – order RPMA/B/C with A, B or C to designate key option



### MicroZone™

#### Micro Adjustment

For fast and precise projector registration, including flush-mount installations.



### Centris™ Technology

#### Fingertip Adjustment

Enables effortless, fingertip positioning

## ALSO AVAILABLE

### RPA™ Projector Mount

Universal Option Shown

- Independent Roll, Pitch and Yaw
- Integrated Cable Management
- Quick Projector Connect/Disconnect
- All-Points™ Security System



## PROJECTOR MOUNTS

Model	Type	Max Weight	Color(s)
RPM*	Custom	50 lbs (22.7 kg)	■
RPM-U*	Universal	50 lbs (22.7 kg)	■ ■ ■
RPA	Custom	50 lbs (22.7 kg)	■
RPA-U	Universal	50 lbs (22.7 kg)	■ ■ ■

\*For Q-Lock™ integrated security, order RPMA, RPMB or RPMC with A, B or C designating the key option.



## ACCESSORIES

Model	Description	Color(s)
CMS115™	Ceiling Plate	■ ■ ■
CMS™-0XX0XX	1-1/2" NPT Adjustable Extension Column	■ ■ ■
CMS™-0XX	1-1/2" NPT Fixed Extension Column	■ ■ ■
CMS440™	Lightweight Suspended Ceiling Kit	■
CMS445™	Ceiling Tile Replacement Kit	■
CMA470™	Plenum Enclosure for CMS440	■



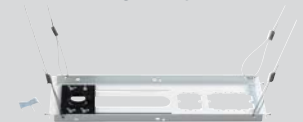
CMS115



CMA470



CMS-0XX0XX



CMS440

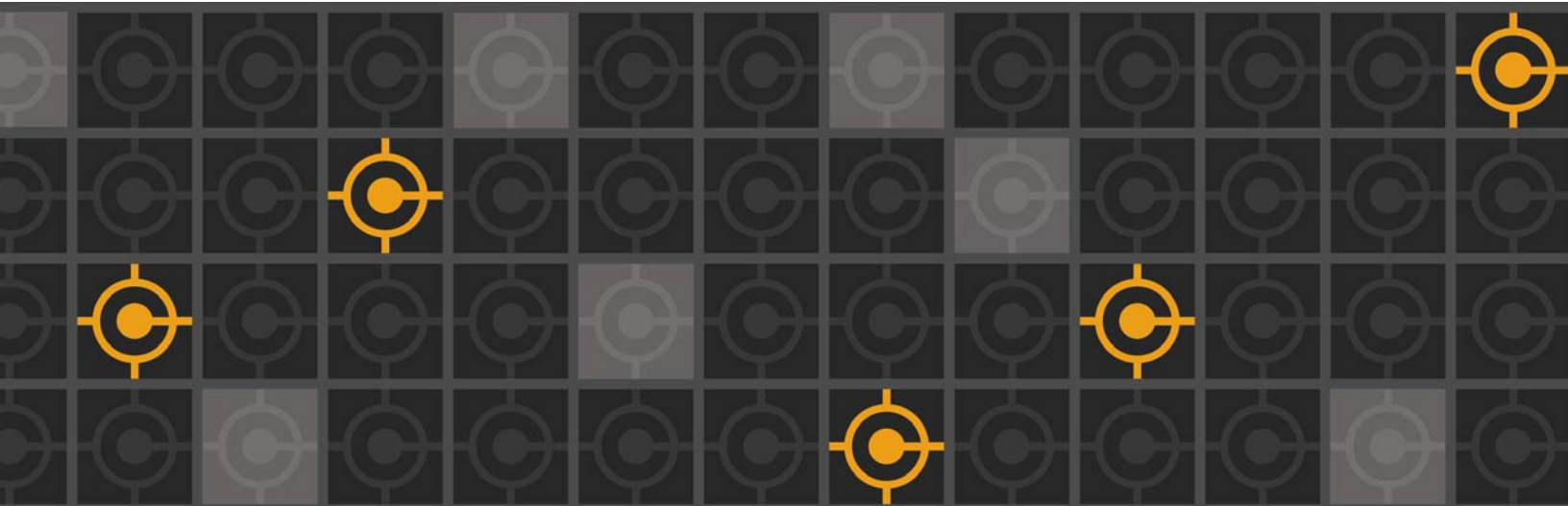


CMS445

FOR A COMPLETE LIST OF ACCESSORIES, VISIT [WWW.CHEIFMFG.COM](http://WWW.CHEIFMFG.COM)



# PROJECTOR SECURITY GUIDE



Distribuido por:  | T +34 976 572 279 • F +34 976 573 673 • [www.tecco.net](http://www.tecco.net)

 CHIEF<sup>®</sup>

[www.chiefmfg.com](http://www.chiefmfg.com)

CHIEF MANUFACTURING  
A DIVISION OF CSAV, INC.

USA/INTERNATIONAL  
[chief@chiefmfg.com](mailto:chief@chiefmfg.com)

■ 8401 EAGLE CREEK PARKWAY, SAVAGE MN 55378 USA  
P 800.582.6480 ■ 952.894.6280  
F 877.894.6918 ■ 952.894.6918

CHIEF MOUNTS CANADA  
[info@chiefmounts.ca](mailto:info@chiefmounts.ca)

■ 2-310 FIRST STR, MIDLAND ON L4R 3N9 CANADA  
P 877.345.4329 ■ F 888.377.5314

CSAV EUROPE B.V.  
[europe.chief@csavinc.com](mailto:europe.chief@csavinc.com)

■ FELLENOORD 130, 5611 ZB EINDHOVEN, NETHERLANDS  
P +31 (0) 40 2668620 ■ F +31 (0) 40 2668615

CSAV ASIA PACIFIC LTD  
[asia.chief@csavinc.com](mailto:asia.chief@csavinc.com)

■ ROOM 29G, H, I, LILY YINDU INTERNATIONAL BUILDING,  
LUOGANG, BUJI TOWN, SHENZHEN, CHINA, 518112  
P 86 755 8996 9226 ■ F 86 755 8996 9217

©2007 CSAV, Inc. Printed in the USA. 100127A 3/07. Chief is a registered trademark of CSAV, Inc. All other brand names or marks are used for identification purposes and are trademarks of their respective owners. All patents are protected under existing designations. Other patents pending.