



PROFESSIONAL MOUNTING SOLUTIONS

Chief monitor mounts create healthcare workstations that meet the needs of today's healthcare professionals. Perfect for most health-related applications, Chief mounts move with the user providing the most stable, simple-to-use, space-conscious workstations available.

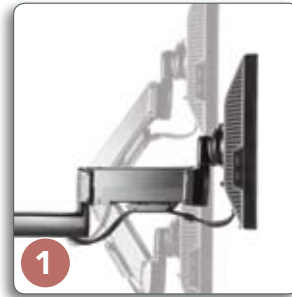


PROFESSIONAL MOUNTING SOLUTIONS

FLAT PANEL & MONITOR MOUNTS

MOBILE WORKSTATIONS RADIOLOGY LABS NURSES STATIONS PATIENT ROOMS

SINGLE MONITOR MOUNTS



MULTI-MONITOR MOUNTS



WHY CHIEF?

1

EFFORTLESS HEIGHT ADJUSTMENT

Smooth, fluid height adjustment accommodates the vast majority of users. Once adjusted, the screen stays put without the use of levers or knobs.

2

CENTRIS™ TECHNOLOGY

This patented feature provides gravity-centered fingertip adjustment for easy tilt and side-to-side pivot. Simple grasp, move and release monitor. Screens in multi-monitor solutions are independently adjustable for proper ergonomic alignment

3

SPACE-SAVING DESIGNS

Chief's full swing mounts collapse to an ultra-low profile, maximizing workspace utilization.

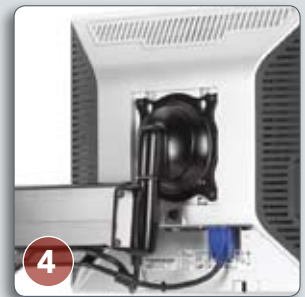
4

EASY INSTALLATION

No assembly required. Convenient keyhole eyelets for monitor install with universal VESA® compliant interface.

3

Preferred mount for PACS applications



MONITOR SOLUTIONS

APPLICATIONS

Ideal for:

- Radiology Suites
- PACS (Picture Archiving and Communications Systems)
- EHR (Electronic Health Records)



KCG110



KCY220

SPECIFICATIONS

Model	Screen Size Range	Extension Range	Tilt	Weight Capacity
Monitor Solutions				
KCG110	10 - 30"	2.19 - 20" (56 - 508 mm)	±15°	5 - 25 lbs (2.3 - 11.4 kg)
KCY220	10 - 26"	2.19 - 20" (56 - 508 mm)	±15°	5 - 20 lbs (2.3 - 9.1 kg) per arm

Model	Number of Monitors	Max Monitor Width	Max Monitor Height	Pole Height	Tilt	Weight Capacity (per monitor)
Table Stand Arrays						
KTP220	2	22.7" (577 mm)	26" (660 mm)	14" (356 mm)	±15°	35 lbs (15.9 kg)
KTP225	2	30" (762 mm)	26" (660 mm)	14" (356 mm)	±15°	35 lbs (15.9 kg)
KTP230	2	-	19.3" (490 mm)	±15°	35 lbs (15.9 kg)	
KTP320	3	18" (457 mm)	26" (490 mm)	14" (356)	±15°	30 lbs (13.6 kg)
KTP440	4	22.7" (577 mm)	18" (457 mm)	28.5" (724 mm)	±15°	20 lbs (9.1 kg)
KTP445	4	30" (762 mm)	18" (457 mm)	28.5" (724 mm)	±15°	20 lbs (9.1 kg)



KTP220



KTP225



KTP320



KTP230



KTP440



KTP445

FLAT PANEL TV SOLUTIONS

APPLICATIONS

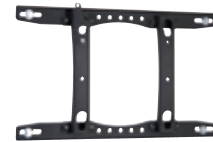
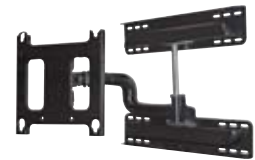
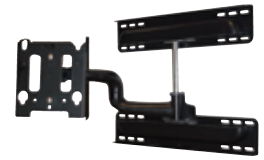
Ideal for:

- In-Patient Rooms
- Conference Rooms
- Lobbies
- Operating Rooms

ACCESSORIES

Steel Stud Drywall Anchor Kits:
For Fixed & Tilt Wall Mounts

- PAC115
- PAC116
- PAC117



SPECIFICATIONS

Model	Screen Size Range	Depth/Extension from Wall	Tilt	Weight Capacity
Steel Stud Solutions				
FWDSK	10 - 26"	2.85 - 15.85" (72 - 403 mm)	±15°	25 lbs (11.3 kg)
JWDSK	27 - 45"	3.5 - 20.38" (89 - 517 mm)	±15°	75 lbs (34 kg)
MWRSK	30 - 50"	3.38 - 24.88" (89 - 632 mm)	+5/-15°	100 lbs (45.4 kg)
PWRSK	42 - 65"	3.5 - 25" (89 - 635 mm)	+5/-15°	100 lbs (45.4 kg)

Fixed Flat Panel Solutions

FSRV	10 - 26"	.75" (19 mm)	-	45 lbs (20.4 kg) stud 30 lbs (13.6 kg) drywall
MSRV	27 - 45"	1.56" (40 mm)	-	100 lbs (45.4 kg)
MSRU	30 - 50"	2.25" (57 mm)	-	125 lbs (56.7 kg)
PSTU	42 - 65"	2.31" (59 mm)	-	200 lbs (90.7 kg)

Tilt Flat Panel Solutions

FTRV	10 - 26"	1.94" (50 mm)	+5/-15°	45 lbs (20.4 kg) stud 30 lbs (13.6 kg) drywall
MTRV	27 - 45"	1.81" (46 mm)	-15°	100 lbs (45.4 kg)
MTRU	30 - 50"	2.5" (64 mm)	-15°	125 lbs (56.7 kg)
PLPU	42 - 65"	2.31" (59 mm)	-15°	200 lbs (90.7 kg)

Products ending in V ship with a VESA® interface. Products ending in U ship with a universal interface bracket.
MSR, PST, MTR and PLP are pre-approved OSHPD products.



PROFESSIONAL MOUNTING SOLUTIONS

MONITOR MOUNTS

WORKSTATION SOLUTIONS

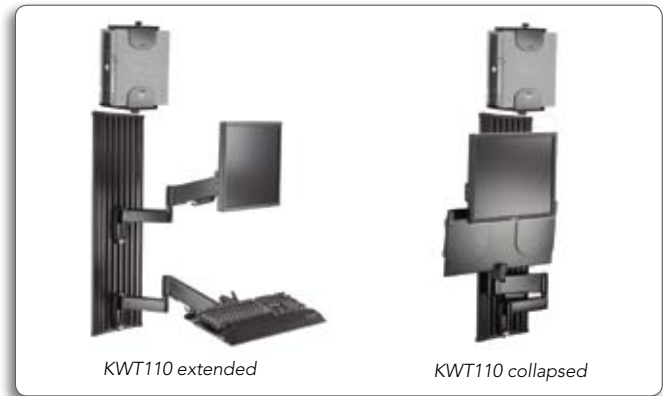
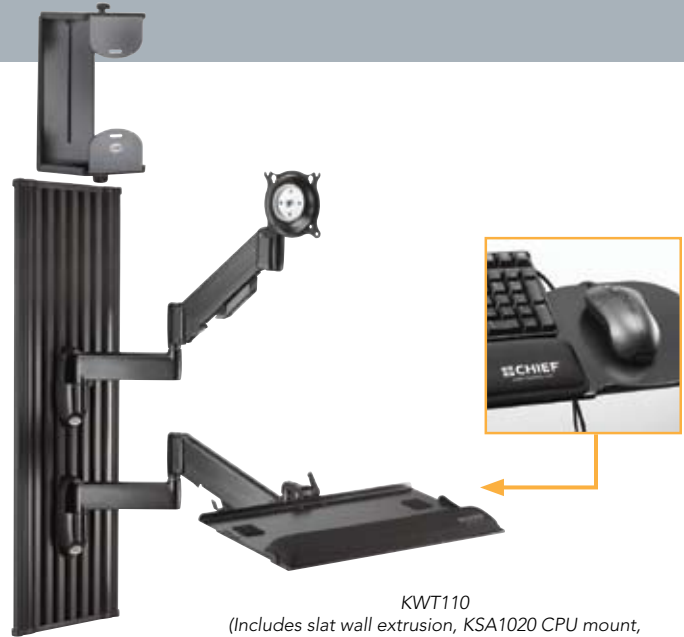
APPLICATIONS

Ideal for:

- Patient Bedside Charting



KWGSK Steel Stuf Monitor Mount and KSA1021 Keyboard Tray Accessory (sold separately)



SPECIFICATIONS

Model	Depth	Max Extension	Height Adjustment	Tilt	Weight Capacity
KWT110 Wall Track Solution					
KWG110	2.19" (56 mm)	19.5" (495 mm)	13.25" (337 mm)	±15°	5 - 25 lbs (2.3 - 11.4 kg)
KWK110	3.33" (85 mm)*	29.2" (742 mm)	13.25" (337 mm)	5° & 90°	10 lbs (4.5 kg)
KSA1020	0 - 7.5" (0 - 191 mm)	–	9.75 - 18" (248 - 457 mm)	–	40 lbs (18.1 kg)
Other Configurations					
KWGSK	2.85" (72 mm)	19.37" (492 mm)	13.25" (337 mm)	±15°	25 lbs (11.3 kg)
KSA1021	8" (203 mm)**	–	2" (51 mm)	–	Reduces capacity of mount by 5 lbs (2.3 kg)

*When keyboard is stored in flipped up position. **Maximum keyboard depth.



PROFESSIONAL MOUNTING SOLUTIONS

FLAT PANEL MOUNTS

MOBILE CARTS & STANDS

APPLICATIONS

Ideal for:

- Video Conferencing



PFC



PF1

SPECIFICATIONS

Model	Screen Size Range	Height Adjustment	Tilt	Weight Capacity
Flat Panel Carts				
MFC	30 - 55"	4 - 6' (120 - 180 cm)	±15°	125 lbs (56.7 kg)
PFC	42 - 71"	4 - 6' (120 - 180 cm)	±15°	200 lbs (90.7 kg)
Flat Panel Stands				
MF1	30 - 55"	4 - 7' (120 - 210 cm)	±15°	125 lbs (56.7 kg)
PF1	42 - 71"	4 - 7' (120 - 210 cm)	±15°	200 lbs (90.7 kg)



SERVICE EXCELLENCE

Chief products are backed by the best in customer service. Contact any of our Customer Service team members M-F, 7am to 7pm (CST) for assistance.



end-user focused faster installation superior service proven quality

CHIEF MANUFACTURING ■ A DIVISION OF MILESTONE AV TECHNOLOGIES ■ www.chiefmfg.com
 USA/International ■ P 800.582.6480/952.894.6280 ■ F 877.894.6918/952.894.6918 ■ chief@chiefmfg.com
 Chief Mounts Canada ■ p 877.345.4329 ■ F 888.377.5314 ■ info@chiefmounts.ca
 Milestone Europe B.V. ■ p 31 (0)40 2668620 ■ F 31 (0)40 2668615 ■ europe@milestone.com
 Milestone AV Technologies Ltd ■ P 852.2145.4099 ■ F 852.2145.4477 ■ asia.chief@milestone.com

©2008 Milestone AV Technologies, a Duchossois Group Company. 800208B 10/08. Chief is a registered trademark of Milestone. All other brand names or marks are used for identification purposes and are trademarks of their respective owners. All patents are protected under existing designations. Other patents pending.